

E♭ Instruments The Sixteen Men of Tain

Fast Swing

Allan Holdsworth

Head/Bass Solo:

A A sus2/D A sus2/C# G sus2/B

5 A sus2/D A sus2/C# G sus2/B

9 A sus2/D A sus2/C# G sus2/B

13 A sus2/D A sus2/C# B sus2/D#

B E-11

B♭Δ13(#11)

B-11

G#-9

A⁶₉

A sus2/D A sus2/C# G sus2/B

26

A sus2/D A sus2/C# G sus2/B

30

A sus2/D A sus2/C# G sus2/B

34

A sus2/D A sus2/C# B sus2/D#

38

(end bass solo)

C F#pedal

41

F#pedal

G sus2/D

A/D

45

Epedal

49

A⁶₉

B⁶₉

G⁶₉

B^b_Δ7(#11)

53

F#5

G#5

Repeat once for bass solo

57

D **Guitar Solo:**

61 **B \flat /A \flat** **C \sharp /A** **E \flat /D \flat** **F \sharp /D**

Bass pedals

69 **A \flat /G \flat** **B/G** **D/C** **F/D \flat**

77 **G/F** **B \flat /G \flat** **C/B \flat** **D \sharp /B**

85 **B \flat - (Δ 7)** **16**

Bass walks

101 **F \sharp /E** **A/F** **B/A** **D/B \flat**

Bass pedals

109 **E/D** **G/E \flat** **B \flat /A \flat** **C \sharp /A**

117 **E \flat /D \flat** **F \sharp /D** **A \flat /G \flat** **B/G**

125 **F \sharp - (Δ 7)** **16**

Bass walks

141 D/C F/D \flat G/F B \flat /G \flat

Bass pedals

149 C/B \flat D \sharp /B F \sharp /E A/F

157 B/A D/B \flat E/D G/E \flat

165 D- (Δ^7) **16**

Bass walks

181 B \flat /A \flat C \sharp /A E \flat /D \flat F \sharp /D

Bass pedals

189 A \flat /G \flat B/G D/C F/D \flat

197 G/F B \flat /G \flat C/B \flat D \sharp /B

205 F \sharp /E A/F B/A

211 D/B \flat E/D G/E \flat

B E-11 EbΔ13(#11) BbΔ13(#11)

217

BbΔ13(#11) B-11 G#-9

221

A⁶₉

224

Drum Solo:

A' A sus2/D A sus2/C# G sus2/B

227

open repeat

On cue:

A sus2/D A sus2/C# B sus2/D#

231

B E-11 EbΔ13(#11) BbΔ13(#11)

234

BbΔ13(#11) B-11 G#-9

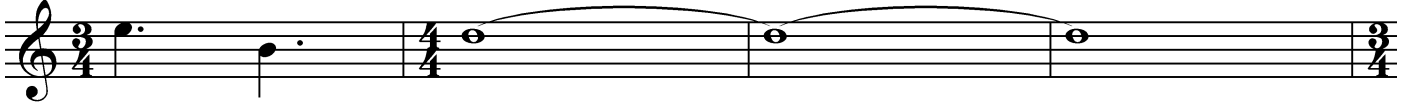
238

A⁶₉

241

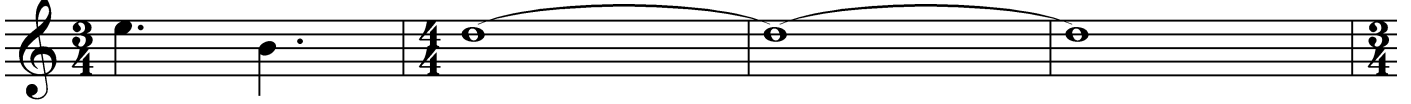
A' A sus2/D A sus2/C# G sus2/B

244



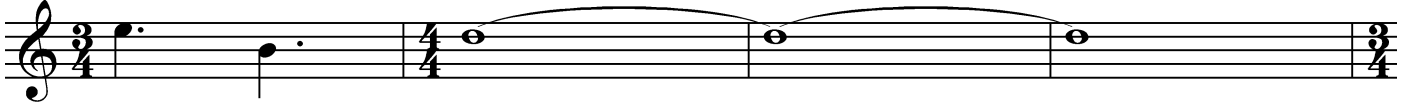
A sus2/D A sus2/C# G sus2/G

248



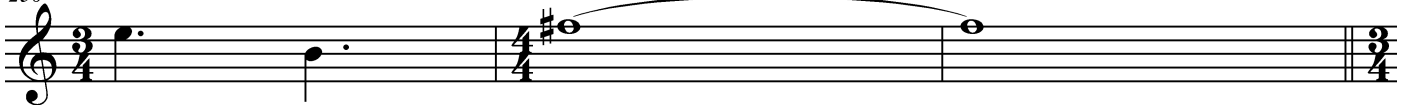
A sus2/D A sus2/C# G sus2/E

252



A sus2/D A sus2/C# B sus2/D#

256



C' F#pedal

259



F#pedal

263



G sus2/D

G/C

Fpedal

267



B^b9⁶

C9⁶

A^b9⁶

B Δ 7(#11)

271



G5

A5

A^bsus2

B^bsus2

275



rit. -----