

B \flat Instruments

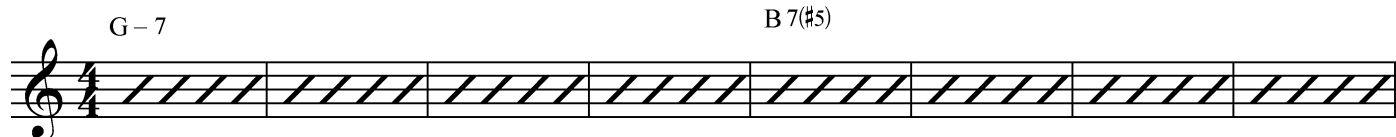
High Hopes

Samba

Bob Fraser

Intro:

G-7 B7(#5)



Head/Solos:

9 E-7 G7 C Δ 7 B7(#5)



13 E-7 B \flat 7(#11) A-7 B7(b9)



17 E Δ 7 G#7(b9) C#-7 E7



21 B \flat 7 G7(b9) A \flat 7 G7(#5)



25 C min A \flat /C B \flat /D E \flat Δ 7



29 E \emptyset 7 A7(b9) D Δ 7 A \flat 7



33 C#min A/C# B/D# E Δ 7



37 G Δ 7 F#-7 B7(#5)



2

High Hopes

E-7

G7

C Δ 7

B7(#5)

41



E-7

B \flat 7(#11)

A-7

B7(b9)

45

E Δ 7G \sharp 7(b9)C \sharp -7

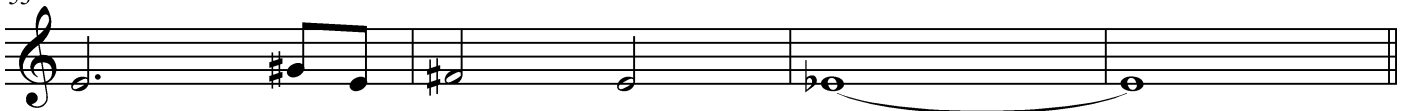
E13

49

B \flat ø7E \flat 7(#9)A \flat Δ7

G7(#5)

53

C Δ 7

D/C

G/B

B \flat 13

57



All unison on head and end of each solo:

E \flat Δ7

D7(#5)

G-7

B7(#5)

61



Ending Vamp:

E-7

G7

C Δ 7

B7(#5)

B \flat 13

A7

C7

B7(#5)

67



On Cue:

C Δ 7

B7(#5)

E min

75

