

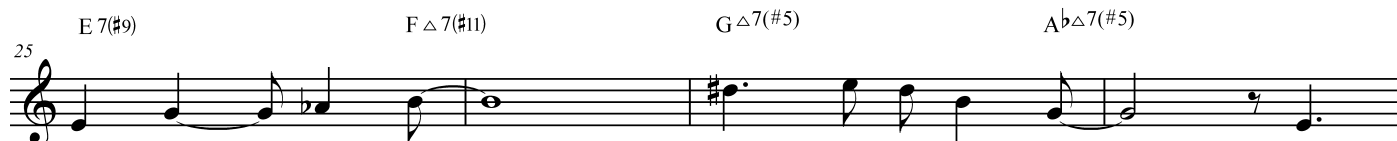
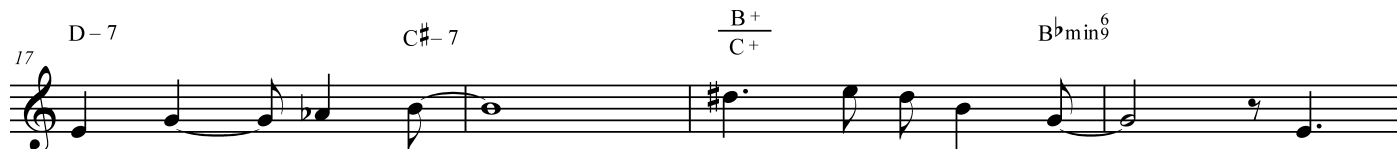
# C Instruments

# Pacific

Medium Swing

Jonathan Kreisberg

C5 (Pedal)



33 Am7(b6) Cm7(b6) D $\emptyset$ 7 Eb-7

38 E $\overset{6}{9}$  F $\overset{6}{9}$  D $\flat$ min $\overset{6}{9}$  D $\emptyset$ 7 Eb-7

42 E $\overset{6}{9}$  F $\overset{6}{9}$  C $\sharp$ m( $\Delta$ 7) A-7 F $\Delta$ 7 C $\sharp$ m( $\Delta$ 7) To Coda

Solos:

47 C5 (pedal)

51

55 D-11 C $\Delta$ 7 A9( $\sharp$ 11) F $\Delta$ 7( $\sharp$ 11)

59 D-11 D $\flat$  $\Delta$ 9 B $\flat$ -9

63 D-7 C $\sharp$ -7 B $\overset{+}{C}$  B $\flat$ m( $\Delta$ 7)

Pacific

67 A-7 A<sup>b</sup>Δ7 D-7 E<sup>b</sup>9

71 E 7(#9) F Δ 7(#11) G Δ 7(#5) A<sup>b</sup>Δ 7(#5)

75 B Δ 7(#5) D<sup>b</sup>Δ 7 D 7(#9)

79 A m 7(b6) C m 7(b6) D ø 7 E<sup>b</sup>- 7

84 E 9 F 9 D<sup>b</sup>min 9 D ø 7 E<sup>b</sup>- 7

88 E 9 F 9 C#m(Δ7) A-7 F Δ 7 C#m(Δ7) D.C. al Coda

*Progressively break down into free rhythm*  
C5 (Pedal)  
93

97