

B \flat Instruments The South of Everywhere

Jonathan Kreisberg

$\bullet = 120$

Intro: Solo guitar

open repeat



$\bullet = 180$ *Guitar alone 2x, with band 2x*

D Δ 7

F \sharp -7 D Δ 7

F \sharp -7

G \sharp \emptyset 7

A Δ 7

G \sharp \emptyset 7

F \sharp -11

4x



D Δ 7

F \sharp -7 D Δ 7

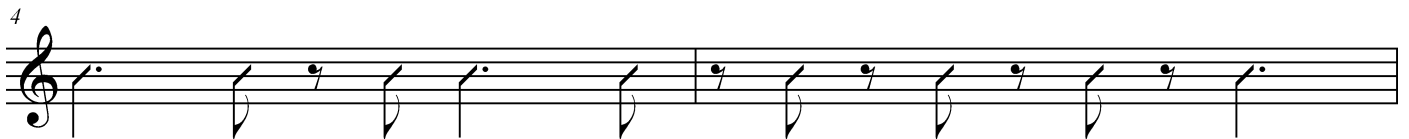
F \sharp -7

G \sharp \emptyset 7

A Δ 7

G \sharp \emptyset 7

F \sharp -11



D Δ 7

F \sharp -7 D Δ 7

F \sharp -7

G \sharp \emptyset 7

A Δ 7

G \sharp \emptyset 7



Head:



20 *To Solo 1 (m. 41)*

24 $\text{G}\sharp-11$ $\text{C}-7(\text{b}6)$ $\text{D}\Delta 7(\#5)$ $\text{E}\Delta 13(\#11)$ $\text{D}\sharp-9$

28 $\text{C}\sharp-7$ $\text{D}\sharp-7(\text{b}6)$ $\text{E}-7(\text{b}6)$

31 $\text{G}\sharp-11$ $\text{C}-7(\text{b}6)$ $\text{D}\Delta 7(\#5)$ $\text{E}\Delta 13(\#11)$ $\text{D}\sharp-9$

35 $\text{C}\sharp-7$ $\text{D}\sharp-7(\text{b}6)$ $\text{E}-7(\text{b}6)$ $\text{F}-7(\text{b}6)$

38 $\text{F}-7(\text{b}6)$ $\text{E}\flat-13$
Fine *open repeat*

On cue, solo guitar:

40 $\text{D}\flat\Delta 7$ $\text{F}-7$ $\text{D}\flat\Delta 7$ $\text{F}-7$ $\text{G}\emptyset 7$ $\text{A}\flat\Delta 7$ $\text{G}\emptyset 7$ $\text{F}-11$ $2x$ *D.S. al Solo 1*

To Solo 2 (m. 49)

Solo 1:

42 G#-11 C-7(b6) DΔ7(#5) EΔ13(#11) D#-9

46 C#-7 D#-7(b6) E-7(b6) *On cue: D.S.S. al Solo 2*

open repeat

Solo 2:

49 DΔ7(#11)

53 D♭Δ7(#11) *On cue: D.S. al Fine*

open repeat