

E♭ Instruments **The South of Everywhere**

Jonathan Kreisberg

♩ = 120

Intro: Solo guitar

open repeat



♩ = 180 *Guitar alone 2x, with band 2x*

A Δ 7

C#-7 A Δ 7

C#-7

D# \emptyset 7

E Δ 7

D# \emptyset 7

C#-11

4x



A Δ 7

C#-7 A Δ 7

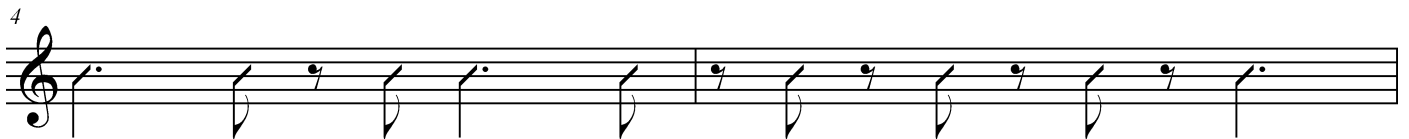
C#-7

D# \emptyset 7

E Δ 7

D# \emptyset 7

C#-11



A Δ 7

C#-7 A Δ 7

C#-7

D# \emptyset 7

E Δ 7

D# \emptyset 7



Head:



20 *To Solo 1 (m. 41)*

24 *S&S*

D#-11 G-7(b6) AΔ7(#5) BΔ13(#11) A#-9

28 G#-7 A#-7(b6) B-7(b6)

31 D#-11 G-7(b6) AΔ7(#5) BΔ13(#11) A#-9

35 G#-7 A#-7(b6) B-7(b6) C-7(b6)

38 C-7(b6) Bb-13 *Fine* *open repeat*

On cue, solo guitar:

40 *D.S. al Solo 1*

A \flat Δ7 C-7 A \flat Δ7 C-7 D \emptyset 7 E \flat Δ7 D \emptyset 7 C-11 2x

To Solo 2 (m. 49)

Solo 1:

42 D#-11 G-7(b6) AΔ7(#5) BΔ13(#11) A#-9

46 G#-7 A#-7(b6) B-7(b6) *On cue: D.S.S. al Solo 2*

open repeat

Solo 2:

49 AΔ7(#11)

53 A^bΔ7(#11) *On cue: D.S. al Fine*

open repeat