

B \flat Instruments

Thru the Eyes of Ruby

$\bullet = 70$ Sixteenth-note rock

Smashing Pumpkins/Arr. Poparad

Intro *Guitar first, then add bass and drums*

open repeat

F \sharp A G \sharp (add 4) B(add 9)



mp



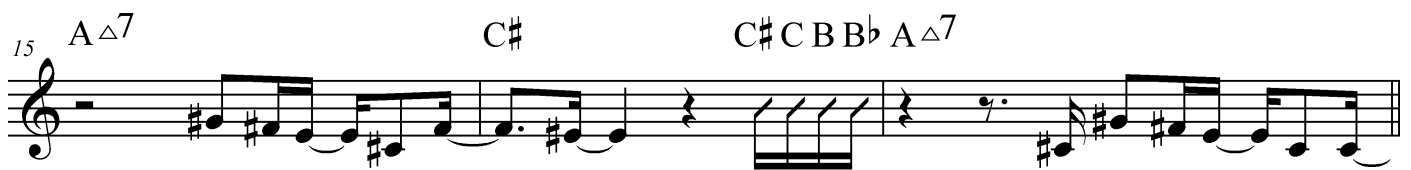
f

Head/Solos/Head Out:



mf

To Coda on Head Out





C

26 C#min B E A C#min B E

f

29 A C#min B E A

32 B C# B

B

35 C# E B AΔ7

37 C# E B AΔ7

39 C# E B AΔ7 G#11

43 G#11

open repeat, vamp and fade