

B \flat Instruments

Inquisition

Pete McCann

Rhumba ♩ = 124

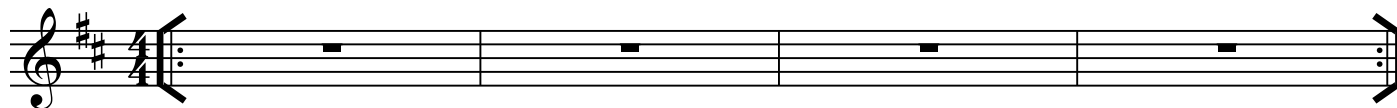
Intro

B min

G Δ 7

C \sharp -7(b5)

F \sharp 7



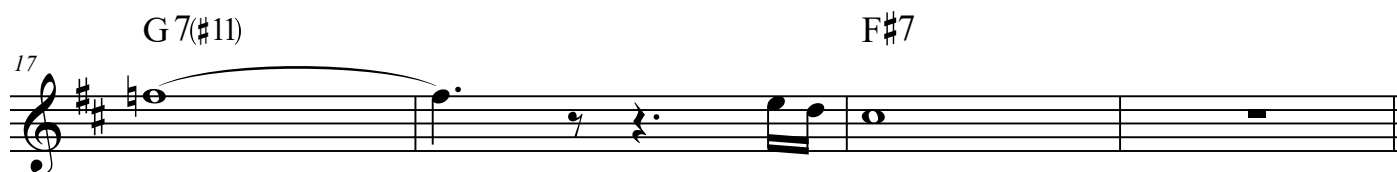
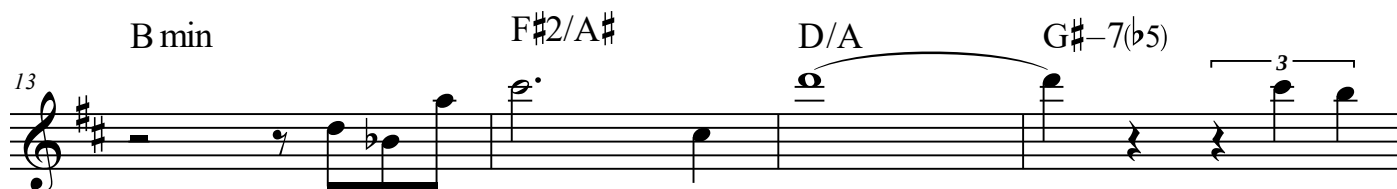
A

B min

G Δ 7

C \sharp -7(b5)

F \sharp 7



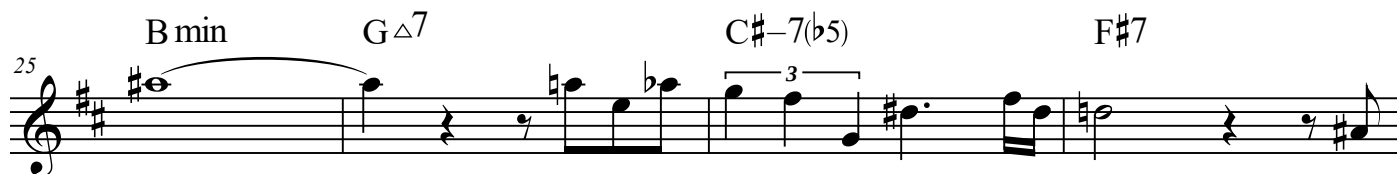
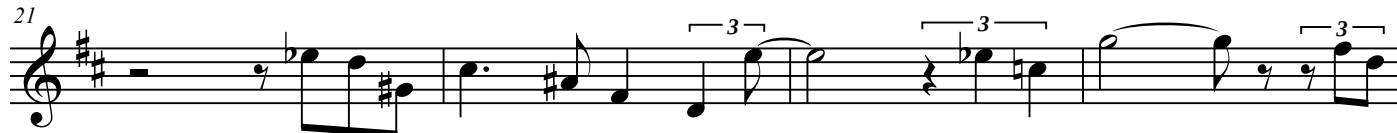
B

B min

G Δ 7

C \sharp -7(b5)

F \sharp 7



Inquisition - 2

29 B min F#2/A# D/A G#-7(b5)

33 G7(#11) To Coda F#7

C 37 B Maj CΔ7(#11) A-7 3x

41 G7(#11) loco F#7 D.S. for Solos D.S. al Coda for Head Out

Ending 45 F#7 rit. a tempo B Maj 8va G#-7

49 EΔ7(#11) C#-7(b5) B Maj

52 G#-7(b5) C#-7 A#o7 rit. last x Open B5