

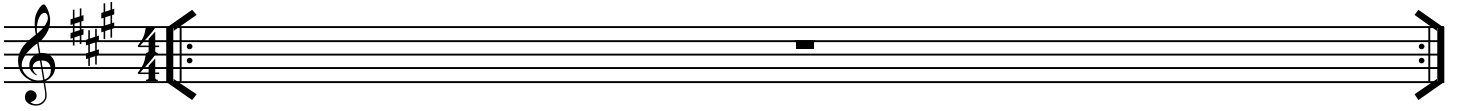
B \flat Instruments

Paint It Black

Rolling Stones
Arr. Tim Ries

Intro

Guitar, free improvisation in F# minor



Interlude

In tempo ♩ = 142

F#-7(b6)

Bass line:

Open



Head

A

F#-7(b6)

Play:



F#-7(b6)



B

D(add 9) A/C# F#- E/G# A Eb7#9 D(add 9) C#7(#9)



F#- E/G# A Eb7#9 F7#9 EΔ13



AΔ7(#11)



Repeat to Interlude

To Coda

Paint It Black - 2

Solos

A F#-7(b6)

24 Musical staff with slash notation and time signature changes (4/4, 3/4, 4/4, 3/4, 4/4).

F#-7(b6)

28 Musical staff with slash notation and time signature changes (4/4, 3/4, 4/4, 3/4, 4/4). Ends with a double bar line and '2x'.

B D(add 9) A/C# F#- E/G# A Eb7#9 D(add 9) C#7(#9)

32 Musical staff with slash notation and time signature changes (4/4, 3/4, 4/4, 3/4, 4/4).

F#- E/G# A Eb7#9 F7#9 EΔ13

36 Musical staff with slash notation and time signature changes (4/4, 3/4, 4/4, 3/4, 4/4).

AΔ7(#11)

39 Musical staff with notes and diamond symbols. Includes instruction: 'Repeat to A for additional solos Solo form: AAB'.

D.S. al coda for head out

Drum Solo

F#-7(b6) Bass line:

42 Musical staff with notes and a '0' symbol. Ends with 'Open'.

Ending On Cue: F#-7(b6)

46 Musical staff with notes and a 'Play:' instruction.

F#-7(b6)

50 Musical staff with notes and a 'ritard' instruction. Ends with 'F#m(Δ7)'.

ritard - - - - -