

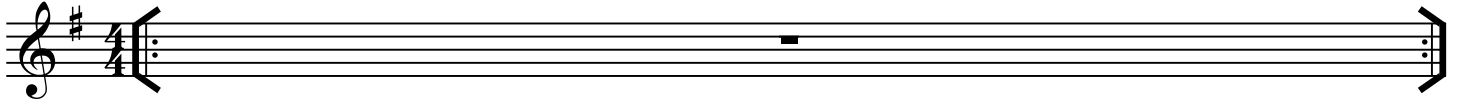
# C Instruments

# Paint It Black

Rolling Stones  
Arr. Tim Ries

## Intro

Guitar, free improvisation in E minor

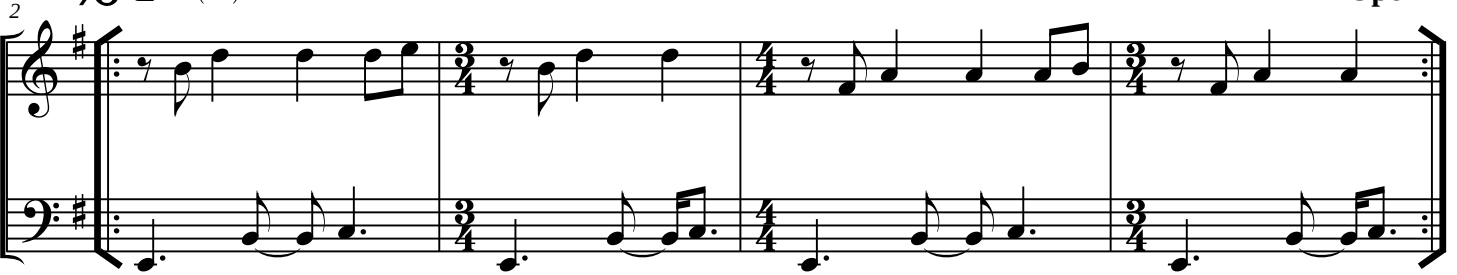


## Interlude

In tempo ♩ = 142

E-7(b6)

Open



## Head

A E-7(b6)



E-7(b6)



B C(add9) G/B E- D/F# G Db7#9 C(add9) B7(#9)



Paint It Black - 2

18 E- D/F# G Db7#9 Eb7#9 DΔ13

21 GΔ7(#11) Repeat to Interlude To Coda

Solos

A E-7(b6)

24

E-7(b6)

28 2x

B C(add9) G/B E- D/F# G Db7#9 C(add9) B7(#9)

32

Paint It Black - 3

E- D/F# G Db7<sup>#9</sup>/<sub>5</sub> Eb7<sup>#9</sup>/<sub>5</sub> DΔ13

36

G Δ7(#11)

Repeat to A for additional solos  
Solo form: AAB

39

D.S. al coda for head out

Drum Solo

E-7(b6)

Open

42

Ending

On Cue:  
E-7(b6)

46

E-7(b6)

Em(Δ7)

50