

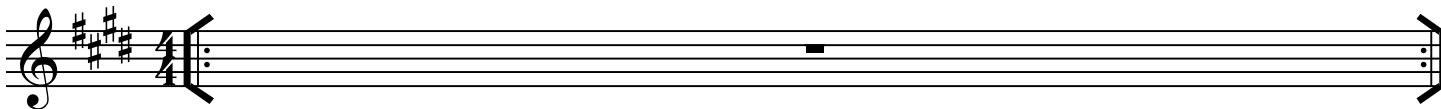
E♭ Instruments

Paint It Black

Rolling Stones
Arr. Tim Ries

Intro

Guitar, free improvisation in C# minor



Interlude

In tempo ♩ = 142

C#-7(b6)

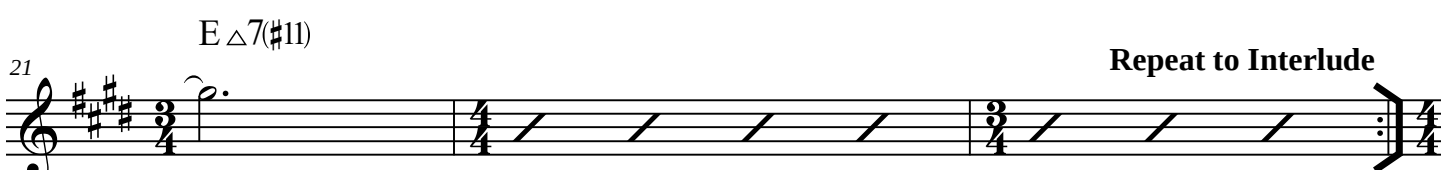


Head

A C#-7(b6)



B A(add 9) E/G# C#- B/D# E B♭7#9 A(add 9) G#7(#9)



Repeat to Interlude

To Coda

Paint It Black - 2

Solos

A C#-7(b6)

24 Musical staff with slash notation and time signatures 4/4, 3/4, 4/4, 3/4, 4/4.

C#-7(b6)

28 Musical staff with slash notation and time signatures 4/4, 3/4, 4/4, 3/4, ending with a double bar line and '2x'.

B A(add 9) E/G# C#- B/D# E Bb7#9 A(add 9) G#7(#9)

32 Musical staff with slash notation and time signatures 4/4, 3/4, 4/4, 3/4, 4/4.

C#- B/D# E Bb7#9 C7#9 BΔ13

36 Musical staff with slash notation and time signatures 4/4, 3/4, 4/4, 3/4.

E Δ7(#11)

Repeat to A for additional solos
Solo form: AAB

39 Musical staff with notes and diamond symbols, time signatures 3/4, 4/4, 3/4, 4/4.

D.S. al coda for head out

Drum Solo

C#-7(b6)
Bass line:

42 Musical staff with notes and a '0' symbol, time signatures 4/4, 3/4, 4/4, 3/4, 4/4.

Open

Ending

On Cue:
C#-7(b6)

46 Musical staff with notes, time signatures 4/4, 3/4, 4/4, 3/4, 4/4.

C#-7(b6)

C#m(Δ7)

50 Musical staff with notes, time signatures 4/4, 3/4, 4/4, 3/4.

ritard - - - - -