

C Instruments

Peg

Steely Dan

Rock ♩ = 116

Intro

G⁶₉

F[#]7([#]9)

F⁶₉

E7([#]9)

Musical staff for measures 1-4 of the Intro section. The staff shows a melodic line in G major with a 4/4 time signature. Measure 1 has a G⁶₉ chord. Measure 2 has an F[#]7([#]9) chord. Measure 3 has an F⁶₉ chord. Measure 4 has an E7([#]9) chord.

5 E^b₉⁶ D7([#]9) C^Δ7 G_{2/B} C^Δ7 Gadd9

Musical staff for measures 5-8 of the Intro section. Measure 5 has an E^b₉⁶ chord. Measure 6 has a D7([#]9) chord. Measure 7 has a C^Δ7 chord and a G_{2/B} chord. Measure 8 has a C^Δ7 chord and a Gadd9 chord.

C^Δ7 Gadd9

C^Δ7 Gadd9

C^Δ7 Gadd9

C^Δ7 Gadd9

Musical staff for measures 9-12 of the Intro section. Each measure (9, 10, 11, 12) contains a C^Δ7 chord followed by a Gadd9 chord.

Musical staff for measures 13-16 of the Intro section. Measure 13 has an F^Δ7 chord and a Cadd9 chord. Measure 14 has an F^Δ7 chord and a Cadd9 chord. Measure 15 has a C^Δ7 chord and a Gadd9 chord. Measure 16 has a C^Δ7 chord and a Gadd9 chord.

F^Δ7 Cadd9

F^Δ7 Cadd9

C^Δ7 Gadd9

C^Δ7 Gadd9

Musical staff for measures 17-20 of the Intro section. Each measure (17, 18, 19, 20) contains an F^Δ7 chord followed by a Cadd9 chord.

G^Δ7 Dadd9

F^Δ7 Cadd9

C^Δ7 Gadd9

C^Δ7 Gadd9

Musical staff for measures 21-24 of the Intro section. Each measure (21, 22, 23, 24) contains a G^Δ7 chord followed by a Dadd9 chord.

Musical staff for measures 25-28 of the Intro section. Measure 25 has a G^Δ7 chord and a Dadd9 chord. Measure 26 has an F^Δ7 chord and a Cadd9 chord. Measure 27 has a C^Δ7 chord and a Gadd9 chord. Measure 28 has a C^Δ7 chord and a Gadd9 chord.

Peg - 2

C Δ 7 Gadd9 C Δ 7 Gadd9 C Δ 7 Gadd9 C Δ 7 Gadd9

B

21



F Δ 7 Cadd9 F Δ 7 Cadd9 C Δ 7 Gadd9 C Δ 7 Gadd9

25



G Δ 7 Dadd9 F Δ 7 Cadd9 C Δ 7 Gadd9 C Δ 7 Gadd9

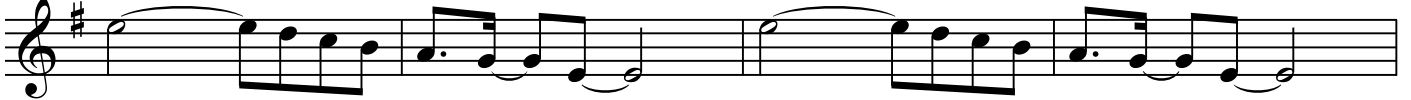
29



C Δ 7 G2/B A-11 E-11 C Δ 7 G2/B A-11 E-11

C

33



A/C# C Δ 13 G Δ 13 F#7(#5) B-7 E7(#9) A-7 C/D

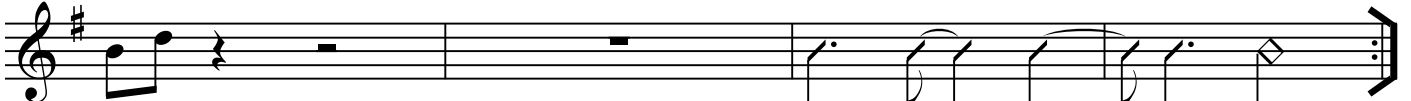
37



C Δ 7 Gadd9 C Δ 7 Gadd9

41

F#-11 B-11 E-7 B-11 C Δ 7



V.S. for ending

Peg - 3

Ending

45 G^6_9 $F\#7(\#9)$ F^6_9 $E7(\#9)$

49 $E\flat^6_9$ $D7(\#9)$ $C\Delta 7$ $G2/B$ $C\Delta 7$ $Gadd9$