

E♭ Instruments

Peg

Steely Dan

Rock ♩ = 116

Intro

E⁶₉ D#7(#9) D⁶₉ C#7(#9)

5 C⁶₉ B7(#9) A^Δ₇ E2/G# A^Δ₇ Eadd9

A^Δ₇ Eadd9 A^Δ₇ Eadd9 A^Δ₇ Eadd9 A^Δ₇ Eadd9

9

D^Δ₇ Aadd9 D^Δ₇ Aadd9 A^Δ₇ Eadd9 A^Δ₇ Eadd9

13

E^Δ₇ Badd9 D^Δ₇ Aadd9 A^Δ₇ Eadd9 A^Δ₇ Eadd9

17

Peg - 2

A Δ 7 Eadd9 A Δ 7 Eadd9 A Δ 7 Eadd9 A Δ 7 Eadd9

B

21



D Δ 7 Aadd9 D Δ 7 Aadd9 A Δ 7 Eadd9 A Δ 7 Eadd9

25



E Δ 7 Badd9 D Δ 7 Aadd9 A Δ 7 Eadd9 A Δ 7 Eadd9

29



A Δ 7 E2/G# F#-11 C#-11 A Δ 7 E2/G# F#-11 C#-11

C

33



F#/A# A Δ 13 E Δ 13 D#7(#5) G#-7 C#7(#9) F#-7 A/B

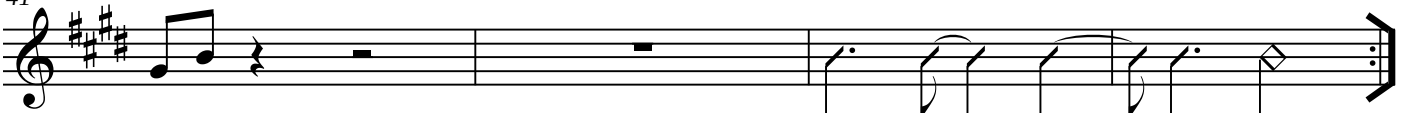
37



A Δ 7 Eadd9 A Δ 7 Eadd9

41

D#-11 G#-11 C#-7 G#-11A Δ 7



V.S. for ending

Peg - 3

Ending

45 E⁶₉ D#7(#9) D⁶₉ C#7(#9)

49 C⁶₉ B 7(#9) A^Δ7 E2/G# A^Δ7 Eadd9

The musical notation is written on two staves in treble clef with a key signature of three sharps (F#, C#, G#). The first staff contains measures 45-48, and the second staff contains measures 49-52. Measure 45 starts with a treble clef, a key signature of three sharps, and a common time signature. The melody consists of eighth and quarter notes. Chord symbols are placed above the staff: E⁶₉ (measures 45-46), D#7(#9) (measure 47), D⁶₉ (measures 48-49), and C#7(#9) (measures 50-51). The second staff begins at measure 49 with a treble clef and a key signature of three sharps. Chord symbols are: C⁶₉ (measures 49-50), B 7(#9) (measures 51-52), A^Δ7 (measures 53-54), E2/G# (measures 55-56), A^Δ7 (measures 57-58), and Eadd9 (measures 59-60). The piece ends with a double bar line.