

E♭ Instruments

She's Leaving Home

Lennon/McCartney
Arr. Brad Mehldau

Swing ♩ = 120

Bass and drums tacet 1st & 2nd x

D♭Maj

A♭7sus4

E♭-7

B♭min

4x



D♭Maj

A♭7sus4

E♭-7

B♭min



F min

B♭min

E♭7



A♭7sus4

A♭7



A♭7sus4

A♭7

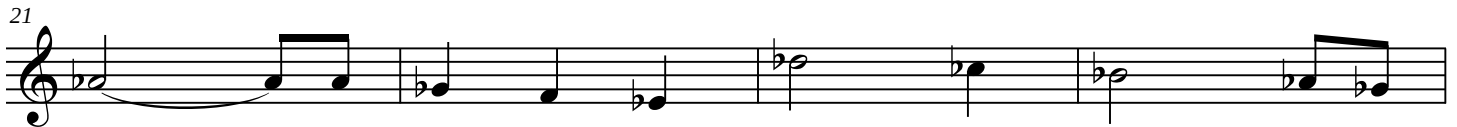


D♭Maj

A♭7sus4

E♭-7

B♭min



G-7(b5)

G♭13



She's Leaving Home - 2

29 Gb/Cb D7#9

33 Gb/Cb D7#9

37 DbMaj

41 DbMaj

45 DbMaj Db/Cb

49 Bb-7 Eb7

53 Bb-7 Eb7

**D.C. for solos (take repeats)
to Coda after head out**

She's Leaving Home - 3


Bass and drums tacet 1st & 2nd x
56 B^b/D $G^\#-7$ $D^\Delta 7/A$ F/E^b 4x




60 B^b/D $G^\#-7$ $D^\Delta 7/A$ F/E^b




64 B^b/D $G^\#-9$



68 A^6_9 $F\ add4/E^b$



72 A^6_9 $F\ add4/E^b$



76 B^b/D $G^\#-7$ $D^\Delta 7/A$ F/E^b Open



On Cue:
80 B^b/D $G^\#-7$ $D^\Delta 7/A$ F/E^b



She's Leaving Home - 4

84 B^b/D $G^\#-9$

88 A^6_9 $F\text{ add}4/E^b$

92 A^6_9 $F\text{ add}4/E^b$

95 B^b/D $G^\#-7$ $D^{\Delta 7}/A$ F/E^b **Open**

On Cue:
99 B^b-7 E^b7

103 B^b-7 E^b7

107 B^b-7 E^b7

111 $G^b\text{Maj}$ $G^b\text{Maj}$ $F\text{ min}$ $E^b\text{min}$ $D^b\text{Maj}$