

Slink

Lyle Mays

Intro

♩ = 156

mp

5

13

A

17

21

Take 2nd ending on D.S. 1

B

26

30

Slink - 2

34

38

A

42

46

50

f *mp*

C

54

$A\flat\Delta 7(\#11)$ C-9 $A\flat\Delta 7(\#11)$ C-9

mf

58

$A\flat\Delta 7(\#11)$ C-9 $A\flat\Delta 7(\#11)$ C-9

62

$A\flat\Delta 7(\#11)$ C-9 $F\Delta 7$ A-7 C $\Delta 7$ 1 E-7

66

2 E-7 To Coda

Slink - 3

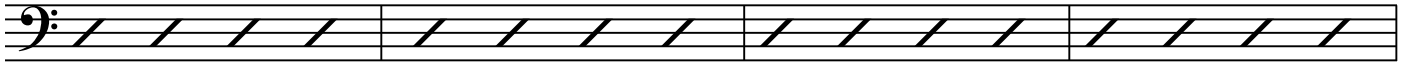
Piano Solo

D

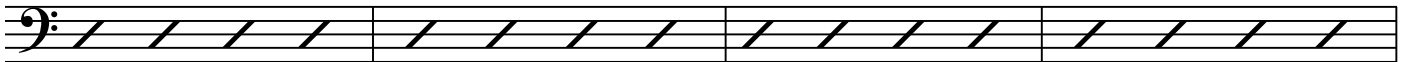
69 Eb Δ 7 G-7 C-7 D-7



73 G-7 B \flat Δ 7 D-7 F Δ 7



77 C Δ 7 Eb Δ 7 G-7 B \flat Δ 7



81 D-7 F Δ 7 C Δ 7



E

85 Eb Δ 7 G-7 C-7 D-7 G-7 B \flat Δ 7 D-7 F Δ 7

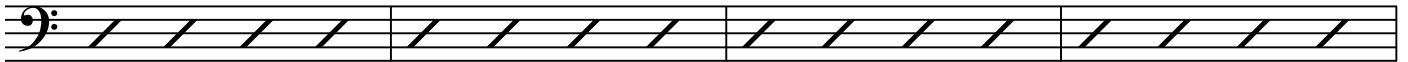


89 C Δ 7 Eb Δ 7 G-7 B \flat Δ 7 D-7 F Δ 7 C Δ 7

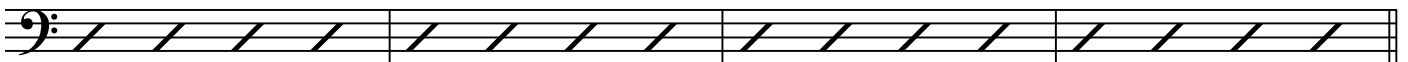


F

93 G \flat /A \flat B \flat /C G \flat /A \flat B \flat /C



97 G \flat /A \flat B \flat /C A-7 C Δ 7 E-7 G Δ 7

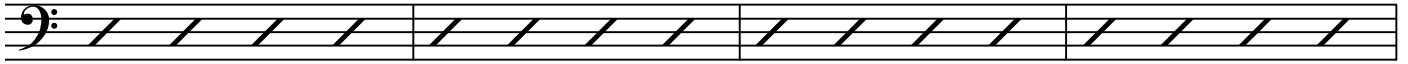


Slink - 4

E

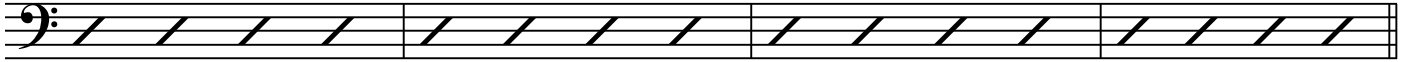
101

E \flat Δ 7 G-7 C-7 D-7 G-7 B \flat Δ 7 D-7 F Δ 7



105

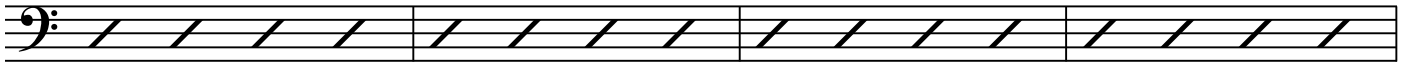
C Δ 7 E \flat Δ 7 G-7 B \flat Δ 7 D-7 F Δ 7 C Δ 7



E

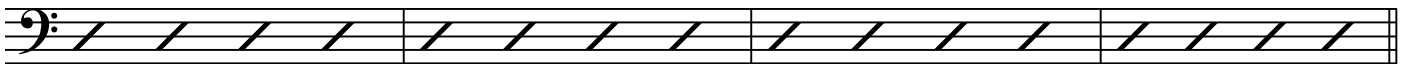
109

E \flat Δ 7 G-7 C-7 D-7 G-7 B \flat Δ 7 D-7 F Δ 7



113

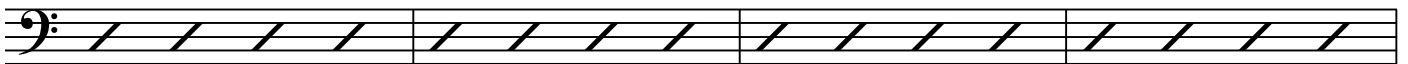
C Δ 7 E \flat Δ 7 G-7 B \flat Δ 7 D-7 F Δ 7 C Δ 7



E

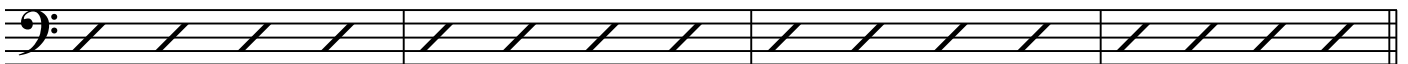
117

E \flat Δ 7 G-7 C-7 D-7 G-7 B \flat Δ 7 D-7 F Δ 7



121

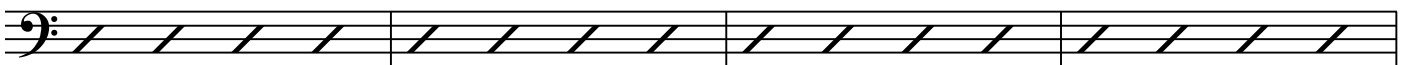
C Δ 7 E \flat Δ 7 G-7 B \flat Δ 7 D-7 F Δ 7 C Δ 7



F

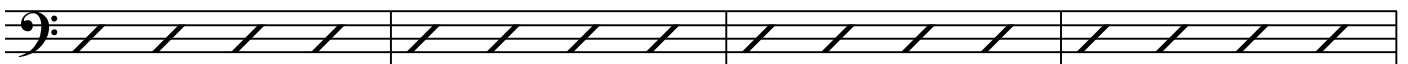
125

G \flat /A \flat B \flat /C G \flat /A \flat B \flat /C



129

G \flat /A \flat B \flat /C A-7 C Δ 7 E-7 G Δ 7



Slink - 5

E

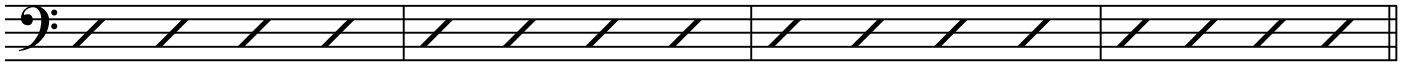
133

E \flat Δ 7 G-7 C-7 D-7 G-7 B \flat Δ 7 D-7 F Δ 7



137

C Δ 7 E \flat Δ 7 G-7 B \flat Δ 7 D-7 F Δ 7 C Δ 7



G

141

A \flat Δ 7(#11) C-9 A \flat Δ 7(#11) C-9



145

A \flat Δ 7(#11) C-9 F Δ 7 A-7 C Δ 7 E-7

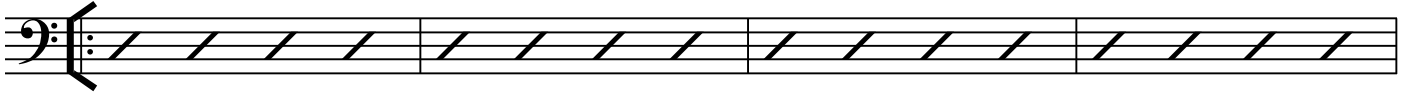


Sax Solo

D

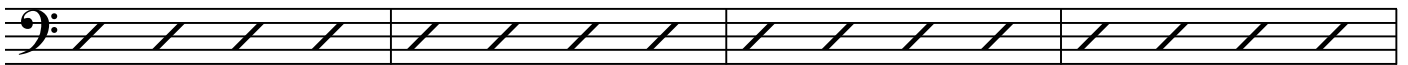
149

E \flat Δ 7 G-7 C-7 D-7



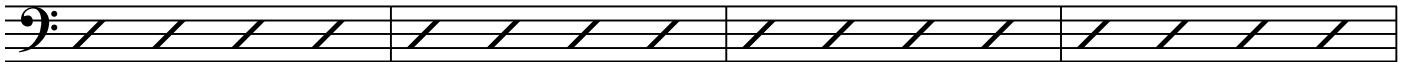
153

G-7 B \flat Δ 7 D-7 F Δ 7



157

C Δ 7 E \flat Δ 7 G-7 B \flat Δ 7



161

D-7 F Δ 7 C Δ 7



Slink - 6

E

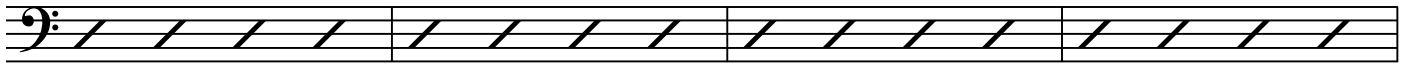
165

G \flat /A \flat

B \flat /C

G \flat /A \flat

B \flat /C



169

G \flat /A \flat

B \flat /C

A-7

C Δ 7

E-7

G Δ 7



F

173

E \flat Δ 7

G-7

C-7

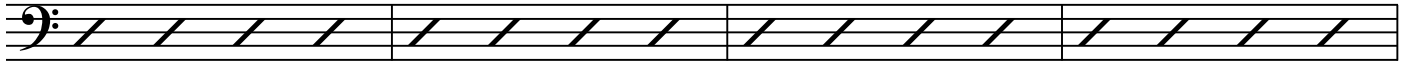
D-7

G-7

B \flat Δ 7

D-7

F Δ 7



177

C Δ 7

E \flat Δ 7

G-7

B \flat Δ 7

D-7

F Δ 7

C Δ 7



G

181

A \flat Δ 7(#11)

C-9

A \flat Δ 7(#11)

C-9



185

A \flat Δ 7(#11)

C-9

F Δ 7

A-7

C Δ 7

E-7



C'

189

A \flat Δ 7(#11)

C-9

A \flat Δ 7(#11)

C-9



193

A \flat Δ 7(#11)

C-9

D.S. al Coda



0

197

B-7

C Δ 7

