

Stolen Moments

Intro

Musical notation for the Intro section, measures 1-4. The piece is in 4/4 time with a key signature of two flats (B-flat and E-flat). The melody in the treble clef consists of sustained chords: a B-flat major triad in the first measure, followed by a B-flat major triad with a 9th in the second, third, and fourth measures. The bass line in the bass clef provides a steady accompaniment of quarter notes: B-flat, E-flat, B-flat, E-flat, B-flat, E-flat, B-flat, E-flat.

Head

Musical notation for the Head section, measures 5-8. The treble clef features a more active melody with eighth and sixteenth notes, including a triplet of eighth notes in measure 5. The bass line continues with quarter notes: B-flat, E-flat, B-flat, E-flat, B-flat, E-flat, B-flat, E-flat.

Musical notation for the Head section, measures 9-12. The treble clef continues with eighth and sixteenth notes, including a triplet of eighth notes in measure 9. The bass line continues with quarter notes: B-flat, E-flat, B-flat, E-flat, B-flat, E-flat, B-flat, E-flat.

Musical notation for the Head section, measures 13-16. The treble clef features a complex, rhythmic melody with many beamed eighth and sixteenth notes. The bass line continues with quarter notes: B-flat, E-flat, B-flat, E-flat, B-flat, E-flat, B-flat, E-flat.

To Coda

Musical notation for the To Coda section, measures 17-20. The treble clef features a complex, rhythmic melody with many beamed eighth and sixteenth notes. The bass line continues with quarter notes: B-flat, E-flat, B-flat, E-flat, B-flat, E-flat, B-flat, E-flat.

Stolen Moments - 2

Solos

C-7

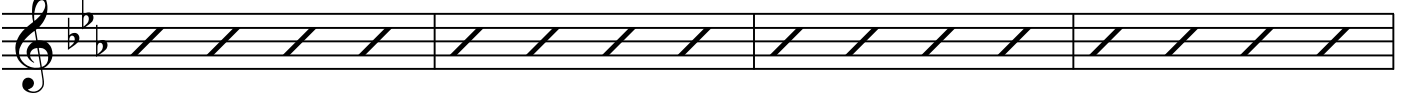
21



F-7

C-7

25



D-7(b5)

G7(b9)

C-7

G7(b9)

29



D.C. al Coda (after solos)



33



35

